

Launch News
German “Mess- und Eichrecht”
with KEBA KeContact P30 ME



KEBA[®]

Automation by innovation.



German “Mess- und Eichrecht” is so easy with KEBA KeContact P30 ME

- The requirement
- Our product highlights
- Sophisticated complete solution
- Easy to use for Charge Point Operator
- Transparency for the e-car user
- Mess- und Eichrecht for everyone
 - Private
 - Semi-public
 - Public

KEBA[®]

Automation by innovation.



The requirement

The “Mess- und Eichrecht” compliant KEBA wall box easily meets all requirements of German measuring and calibration law (MessEG, MessEV, PTB document 6-A):

- ✓ Our devices feature an **immediate display** of the relevant data and automatically store all information locally in the certified **long-term memory**.
- ✓ The **remote transmission** to the backend system / web interface is based on signed data records, enabling **fast and simple verification using** the uniform **transparency software**.
- ✓ Most backends have the function to conveniently pass on the data **from the charging station to the customer**.

Our product highlights



Security of investment

- Certified products
- Software updates
- Expandability
- Individual solution packages

Broad portfolio

- Cable/socket
- RFID
- Communication interfaces

Certified measuring accuracy

- At discharge point Class A

Lead seal



Type plate

- QR Code: Public key

Well-known design

- Premium quality
- Made in Europe

Direct reading on the integrated LED display

- Session energy in kWh

Certified software

- Dataset generation
- Long-term memory
- Remote transmission

KEBA AT2
 KEBA AG, Gewerbeplatz Urfahr, 4041 Linz, Austria 02/19

PN:123456 SN:12345678

KC-P30-EC2401B2-L00-XX
 230/3x230(400)V 0,15-3(32)A
 50Hz 32A L1 10.000 Imp/kWh
 -25°C .. +40°C (in Testmode)

DE-M 19 0366 **CE**
 Cert. Nr.: VDE-12345678 Class A

© copyright, all rights reserved

An intelligent KEBA solution – Mess- und Eichrecht is so easy for everyone



User

- **Start charging:** Customer starts charging by means of ID and this is shown on the LED display

User

- **End charging:** Session energy can be easily and conveniently read on the device's own display

CPO

- **data record** (wall box ID, user ID, session energy) is automatically generated by the device and stored in the long-term memory.

CPO

- **data record is automatically forwarded** to a central backend system (host/cloud) via OCPP after each charging session.
 - Alternative: manual readout in the network via device-specific web interface

EMP

- **Billing** by the electromobility provider (EMP)



An intelligent KEBA solution- Validation

User/
EMP

User



- At the **request** of the invoice recipient, a digitally signed **data record is transmitted** to the user for validation of the invoice items / for invoice verification.
- Using transparency software, the **user checks** the **authenticity** and **correctness** of each invoice item with the help of the OCMF data record and public key.



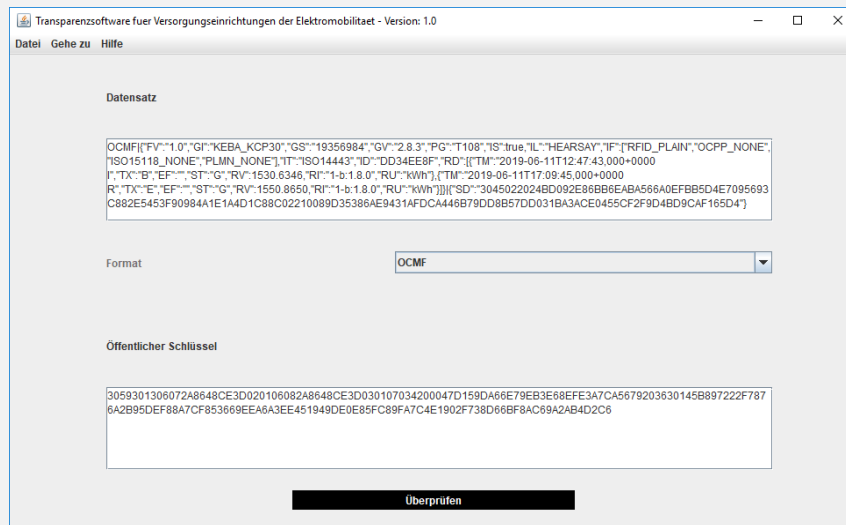
This process complies with the requirements of the German Mess- und Eichrecht and is certified at KEBA by the release process Module B and D.

An intelligent KEBA solution - Validation

Verification of the invoice positions using transparency software

- Uniform solution
- Licensed by KEBA
- Publicly accessible under www.transparenz.software

Entry of signature data by EMP plus
Public key



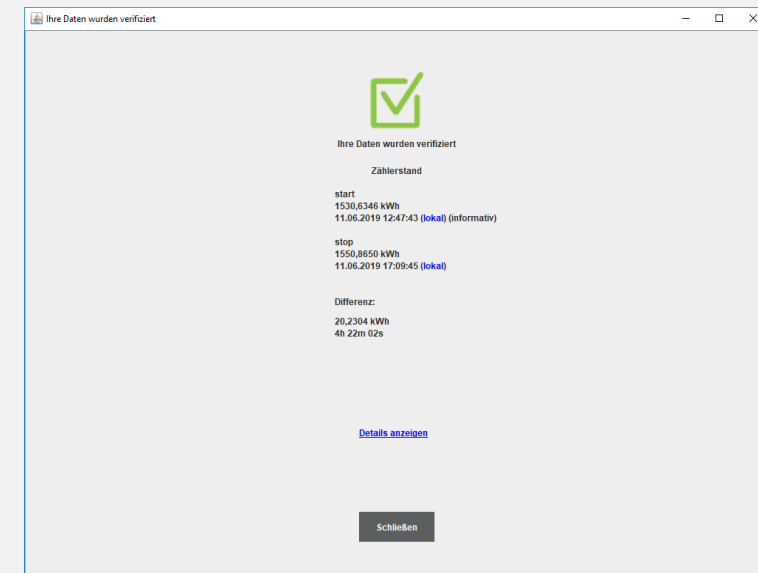
```
OCMF([FV:"1.0";GI:"KEBA_KOP30";GS:"19356984";GV:"2.8.3";PG:"T108";IS:true;IL:"HEARSAY";IF:[RFID_PLAIN;OCPP_NONE];ISO15118_NONE;PLMN_NONE];IT:"ISO14443";ID:"DD34EE8F";RD:[(TM:"2019-06-11T12:47:43.000+0000";TX:"B";EF:"";ST:"G";RV:1530.6346;RI:"1-b:1.8.0";RU:"kWh");(TM:"2019-06-11T17:09:45.000+0000";TX:"E";EF:"";ST:"G";RV:1550.8650;RI:"1-b:1.8.0";RU:"kWh")]);[SD:"3045022024BD092E86BB6EAB56A0EFBB5D4E7095693C882E5453F90984A1E144D1C88C02210089D35386AE9431AFDC4446B79DD8B57D031BA3ACE0455CF2F9D4BD9CAF165D4"]
```

Format: OCMF

Öffentlicher Schlüssel
3059301306072A8648CE3D020106082A8648CE3D030107034200047D159DA66E79EB3E68FE3A7CA5679203630145B897222F7876A2B95DEF88A7CF853669EEA0A3EE451949DE0E85FC89FA7C4E1902F738D66BF8AC09A2AB4D2C6

Überprüfen

Result of the verification



Ihre Daten wurden verifiziert

Zählerstand

start
1530,6346 kWh
11.06.2019 12:47:43 (lokal) (informativ)

stop
1550,8650 kWh
11.06.2019 17:09:45 (lokal)

Differenz:
20,2304 kWh
4h 22m 02s

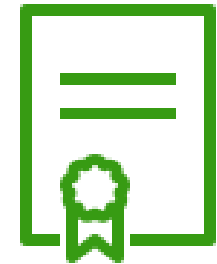
[Details anzeigen](#)

Schließen



An intelligent KEBA solution – Certification process Module B and D

- Module B – Type examination (Tested type)
 - Generation of signed data record:
 - ✓ Customer ID
 - ✓ Session energy billable
 - Long-term memory
 - Remote transmission
- Module D – Quality management system (Certified production processes)
 - Production of verified devices is standard at KEBA
 - Serial production with high quantities
 - ✓ Security of investment through availability of the products (manufacturing capacity)





Easy to use for Charge Point Operators (CPO)



Your requirements:

- Avoid additional costs during installation
- All equipment variants and service as usual
- No changes to the adjacent systems



Our solution:

- Well-established hardware
- Easy to use - our claim is simple installation and commissioning



Your advantages:

- Saving time during installation
- Easy use of the devices
- No additional training required



What is necessary:

- KeContact P30 ME c- / x-series
- Software version 1.9.10.



Transparency for the e-car driver



Your requirements:

- Trust
- Simple invoice verification
- Check the charging session



Our solution:

- Certified hard and software
- Member of the S.A.F.E. initiative
- Immediate display of energy



Your advantages:

- Easy readout of charging data
- Easy invoice verification from the comfort of your home



What is necessary:

- KEBA charging station ME
- Internet access for transparency software
- Public key and data record for verification



Investment security



Your requirements:

- Safe operation
- Expandability
- Flexibility
- Durability



Our solution:

- Customary high quality, made in Europe
- Various compatible backend systems
- Sustainable through update capability, after-sales support and repair service
- Module D certified - Serial production



Your advantages:

- Cost saving
- Mixed operation possible

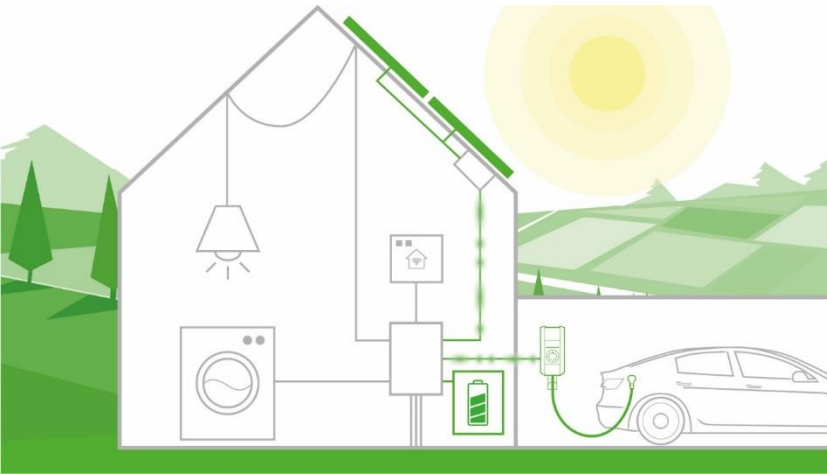
What is necessary:

- KeContact P30 ME c- / x-series
- Software version 1.9.10.

Mess- und Eichrecht for everyone



Private



Requirements

- Invoicing the employer
- Allocation to tenants/owners in multi-family houses
- Multi-client operation also offline

KEBA solution

- Offline operation due to local long-term memory
- Manual reading of the RFID cards in the network via the device's own web interface

Customer benefits

- Neither cloud storage, nor server or backend necessary for data storage (no running costs)

- Smart Home and PV connection

- Customary communication interfaces

- All of the known capabilities of the P30 product range

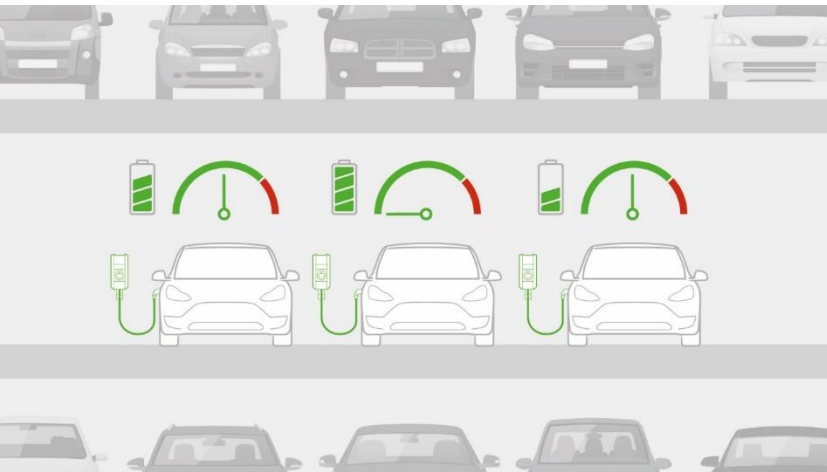
- Cable and socket variants

- Both certified

- Easy to use

Mess- und Eichrecht for everyone

Semi-public



Requirements

- Invoicing offline without backend system (e.g. hotel)

- Remote transmission of OCMF data records via OCPP to all common backend operators

KEBA solution

- Offline operation due to local long-term memory in the device
- Manual reading of the RFID cards in the network via the device's own web interface

- Automatic / remote transmission of signed data records to various backend systems
- Relevant data can be accessed online

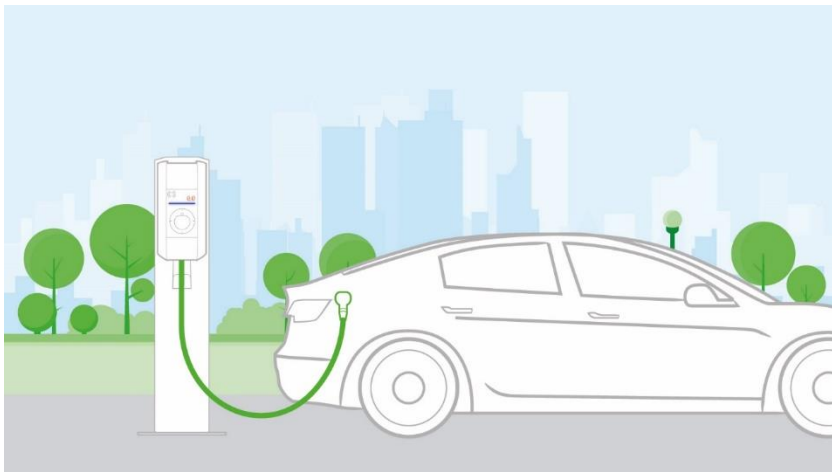
Customer benefits

- Neither cloud storage, nor server or backend necessary for data storage (no running costs)
- Validation of the data record does not have to be done on site
- Fast, user-friendly further processing of the data



Mess- und Eichrecht for everyone

Public



Requirement	KEBA solution	Customer benefits
<ul style="list-style-type: none">• Easy readout of charging data, both day and night	<ul style="list-style-type: none">• Integrated, LED display with immediate indication of session energy	<ul style="list-style-type: none">• Direct, easy verification of the charging session after charging
<ul style="list-style-type: none">• ME verification in charging networks	<ul style="list-style-type: none">• Only one ME x-series necessary• Mixed charging networks possible*	<ul style="list-style-type: none">• Hardware for communication, one-time host service costs

*Note: Update of KeContact x-series master to software version ME 1.9.10 required in advance

KEBA

Automation by innovation.

German “Mess- und Eichrecht” is so easy with KEBA KeContact P30 ME

KEBA AG Headquarters
Gewerbepark Urfahr
4041 Linz/Austria

www.keba.com/emobility-mess-und-eichrecht



KEBA[®]

Automation by innovation.